

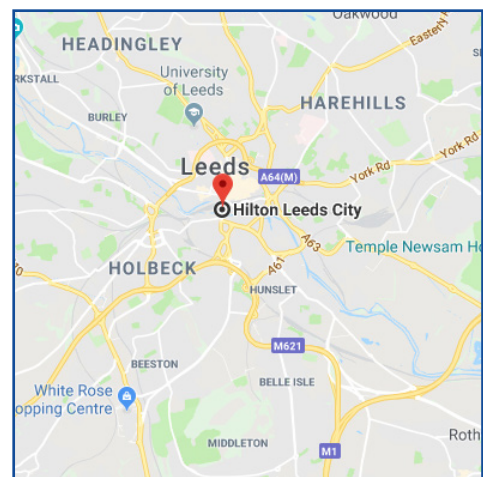


Sharp turn into Hilton Leeds City drop off area; parking entrance is an immediate left after pedestrian entrance.

Location

HILTON LEEDS CITY

Located in the city centre, a 2 minute walk from Leeds Railway Station and within close proximity of the three main shopping centres, Trinity, Victoria Quarter and Victoria Gate. First Direct arena is a 15 minute walk from the hotel, also easily reachable by taxi. The hotel is ideally located close to the two motorway links in an out of the city, the M1 and M62. Leeds Bradford International Airport is a 25 minute drive from the hotel.



DIRECTIONS

HILTON LEEDS CITY

Located in the city centre adjacent to the train station

hilton.com/leedscity

Neville Street, Leeds, LS1 4BX

T: 0113 244 2000

E: events.leedscity@hilton.com



Hilton
LEEDS CITY

Directions

TO HILTON LEEDS CITY

FROM LEEDS BRADFORD AIRPORT

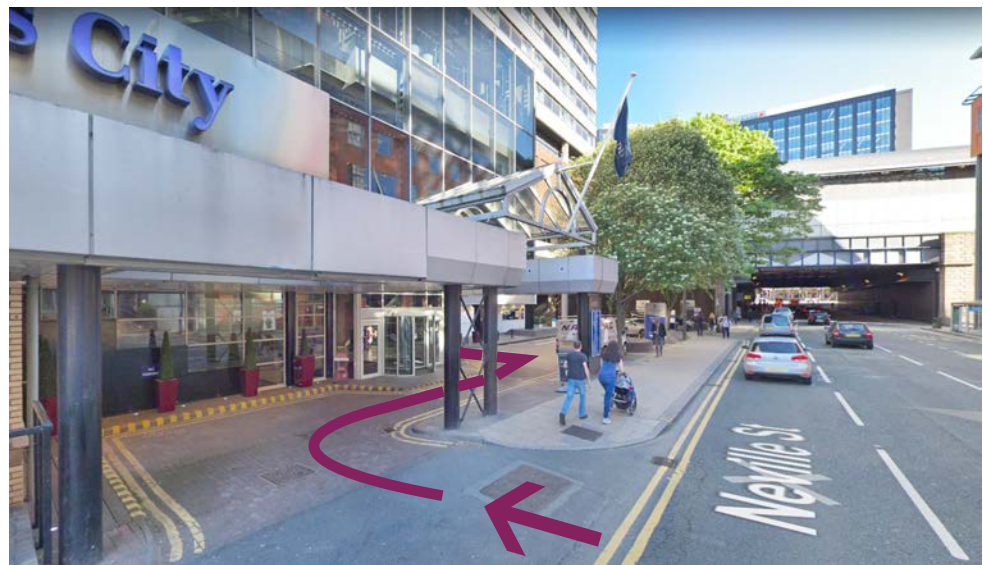
Head towards Rawdon on the A65, then the M621 towards Leeds City Centre. Follow the road, staying in the left-hand lane, and Hilton Leeds City is situated on the left-hand side.

FROM LEEDS CITY TRAIN STATION BY FOOT

Leeds City Train Station is approximately a three minute walk to the hotel. Leave via the new South Entrance located on the south concourse above Platform 16. Bear left after exiting and cross the foot bridge onto Little Neville Street. Walk to the end of Little Neville Street, Hilton Leeds City is located on the left hand side.

HOTEL CAR PARK

The hotel has an onsite car park for 64 vehicles. Large cars and 4x4's can access and be parked with care, but **please be aware of tight turning areas** and proceed with considerable caution. Take a sharp turn from Neville Street into the Hilton Leeds City drop off area immediately past Little Neville Street. The parking entrance is an immediate left after the pedestrian entrance.



HILTON LEEDS CITY

Located in the city centre adjacent to the train station

hilton.com/leedscity

Neville Street, Leeds, LS1 4BX

T: 0113 244 2000

E: events.leedscity@hilton.com

